

*Amy Sillman: After Metamorphoses*  
January 20–March 19, 2017

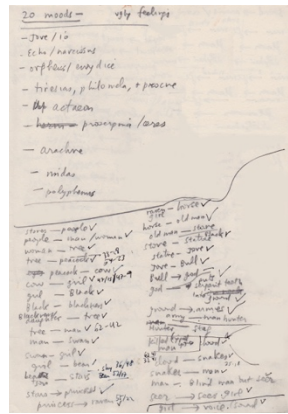
The Lab

Opening Reception: Thursday, January 19, 6–8pm

For further information and images, please contact  
Molly Gross, *Communications Director*, The Drawing Center  
212 219 2166 x119 | [mgross@drawingcenter.org](mailto:mgross@drawingcenter.org)

December 15, 2016

New York – For her exhibition at The Drawing Center, Amy Sillman will present a video (or what she calls an animated drawing) entitled *After Metamorphoses*, that she conceived in 2014 as a Resident at the American Academy in Rome. To create the video, Sillman overlaid abstract drawings (which were made in a bathtub in Berlin) with iPad sketches that precisely follow the sequence of changes that occur in Ovid's fifteen-book narrative. Set to a score by the Berlin-based musician Wibke Tiarks, the video features a variegated background that flashes beneath a series of figures as they transform one into another with a temporal rhythm. In *After Metamorphoses*, Sillman exercises the possibility of endless change, a theme first developed in her animated works and that continues to inform her paintings and drawings. Her adaptation of Ovid is one of a number of works that Sillman has made in collaboration with poets, including Lisa Robertson and Charles Bernstein, among others. In tandem with the exhibition, Sillman will create a limited edition zine, the 11<sup>th</sup> in her series of zines entitled *O.G.* Curated by Claire Gilman, Senior Curator.



Amy Sillman, Score for *After Metamorphoses*, 2015–16.  
Graphite on paper, 1 of 2 pages. Courtesy of the artist.

ABOUT AMY SILLMAN

Born in Detroit in 1955, New York-based artist Amy Sillman has been showing her mercurial drawings, paintings, and animations since the early 1980s. In recent years, solo exhibitions of Sillman's work have been presented at Kunsthaus Bregenz, Austria; Institute of Contemporary Art in Boston; Hirschhorn Museum and Sculpture Garden in Washington, DC; Blaffer Art Museum at the University of Houston; and the Institute of Contemporary Art at the University of Pennsylvania in Philadelphia. Sillman's work has also been included in recent group exhibitions at the Hammer Museum of Art in Los Angeles; Whitney Museum of American Art in New York; Los Angeles County Museum of Art; The Museum of Modern Art in New York; Museum of Contemporary Art in Los Angeles; and the San Francisco Museum of Modern Art, among others.

## CREDITS

*Amy Sillman: After Metamorphoses* is made possible by the support of Sarah Peters and Barbara Toll.

## ABOUT THE DRAWING CENTER

The Drawing Center, a museum in Manhattan's SoHo district, explores the medium of drawing as primary, dynamic, and relevant to contemporary culture, the future of art, and creative thought. Its activities, which are both multidisciplinary and broadly historical, include exhibitions; Open Sessions, a curated artist program encouraging community and collaboration; the *Drawing Papers* publication series; and education and public programs.

## LOCATION, HOURS & ACCESSIBILITY

35 Wooster Street between Broome and Grand Streets in SoHo, New York.  
Gallery hours are Wednesday-Sunday 12pm–6pm, Thursday, 12pm–8pm.  
Tickets: \$5 Adults, \$3 Students and seniors, Children under 12 are free, and free admission Thursdays 6-8pm.

The Drawing Center is wheelchair accessible.

212.219.2166 | [info@drawingcenter.org](mailto:info@drawingcenter.org) | [drawingcenter.org](http://drawingcenter.org)

FACEBOOK: [The Drawing Center](https://www.facebook.com/TheDrawingCenter)

TWITTER: [@drawingcenter](https://twitter.com/drawingcenter)

TUMBLR: [the-drawing-center.tumblr.com](http://the-drawing-center.tumblr.com)

INSTAGRAM: [@drawingcenter](https://www.instagram.com/drawingcenter)

## AT THE DRAWING CENTER

*Cecily Brown: Rehearsal*

Through December 18, 2016

*Olga Chernysheva: Vague Accent*

Through December 18, 2016

*Open Sessions 9*

November 18–December 18, 2016

*Mateo López: Undo List*

January 20–March 19, 2017

*Jackson Mac Low*

January 20–March 19, 2017

*Amy Sillman*

January 20–March 19, 2017

*Mark Dion: Tropical Research Lab*

April 14–June 25, 2017

*Open Sessions 10*

April 14–June 4, 2017

## Installations

*Gary Simmons: Ghost Reels*

Through October 2017

*Jackie Ferrara: Lines*

Through March 2017

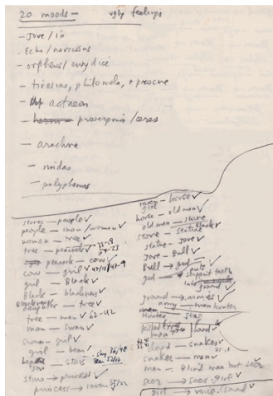
###

Amy Sillman

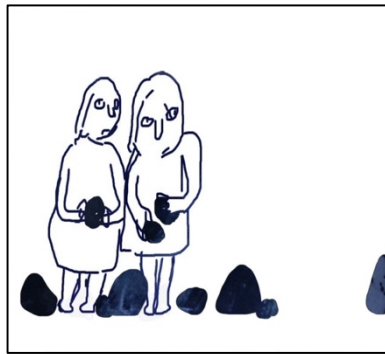
January 20–March 19, 2017

Images Available for Reproduction

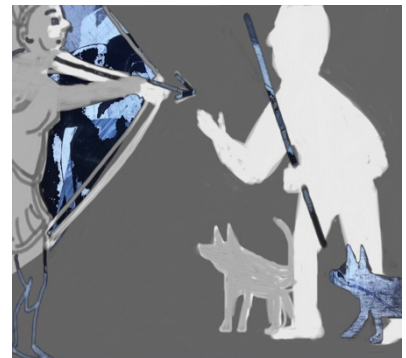
For further information and images, please contact  
Molly Gross, *Communications Director*, The Drawing Center  
212 219 2166 x119 | [mgross@drawingcenter.org](mailto:mgross@drawingcenter.org)



Amy Sillman, *Score for After Metamorphoses*, 2015–16. Graphite on paper, 1 of 2 pages. Courtesy of the artist.



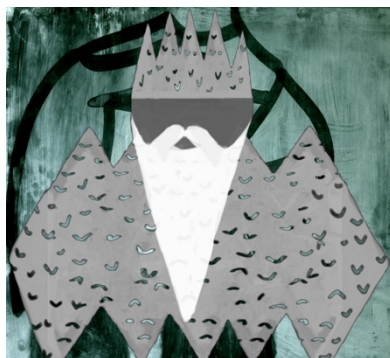
Amy Sillman, *After Metamorphoses*, 2015–16. Video animation with iPad drawings, 5 minutes, looped. Music by Wibke Tiarks. Courtesy of the artist. (film still)



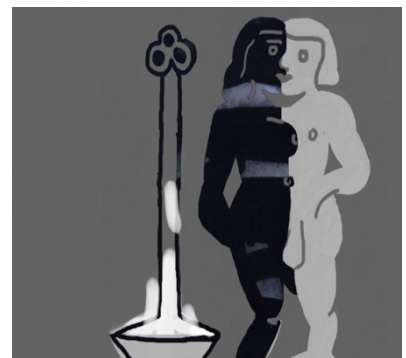
Amy Sillman, *After Metamorphoses*, 2015–16. Video animation with iPad drawings, 5 minutes, looped. Music by Wibke Tiarks. Courtesy of the artist. (film still)



Amy Sillman, *After Metamorphoses*, 2015–16. Video animation with iPad drawings, 5 minutes, looped. Music by Wibke Tiarks. Courtesy of the artist. (film still)



Amy Sillman, *After Metamorphoses*, 2015–16. Video animation with iPad drawings, 5 minutes, looped. Music by Wibke Tiarks. Courtesy of the artist. (film still)



Amy Sillman, *After Metamorphoses*, 2015–16. Video animation with iPad drawings, 5 minutes, looped. Music by Wibke Tiarks. Courtesy of the artist. (film still)